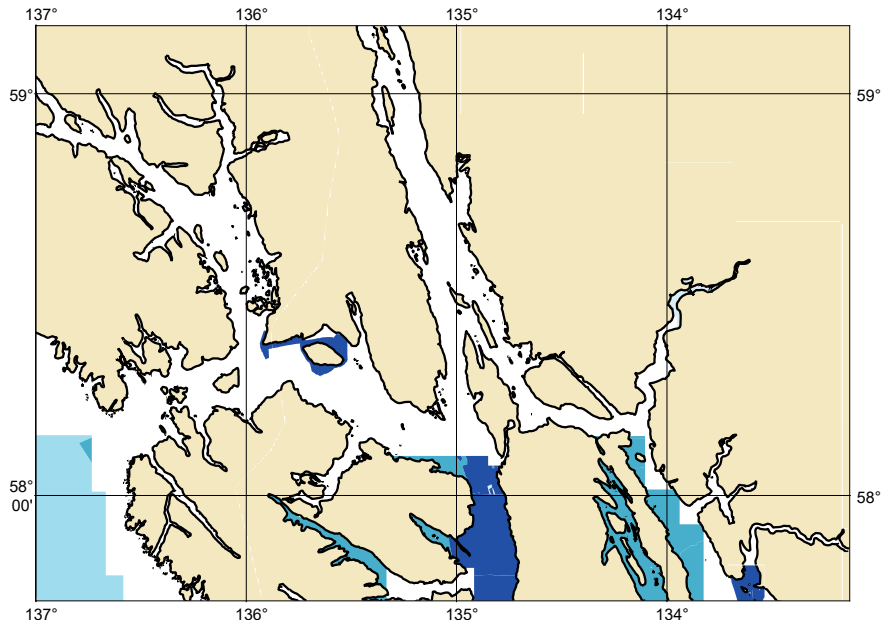



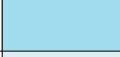
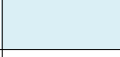


Zone of Confidence (ZOC) Diagram



ZOC CATEGORIES

ZOC	COLOR	POSITION ACCURACY	DEPTH ACCURACY	SEAFLOOR COVERAGE
A1		± 5 m + 5% depth ± 16.4 ft + 5% depth	= 0.50 m +1% d = 1.6 ft +1% d = 0.3 fm +1% d	All significant seafloor features detected.
A2		± 20 m ± 65.6 ft	= 1.00 m +2% d = 3.3 ft +2% d = 0.6 fm +2% d	All significant seafloor features detected.
B		± 50 m ± 164.0 ft	= 1.00 m +2% d = 3.3 ft +2% d = 0.6 fm +2% d	Uncharted features hazardous to surface navigation are not expected but may exist.
C		± 500 m ± 1640.4 ft	= 2.00 m +2% d = 6.6 ft +2% d = 1.1 fm +2% d	Depth anomalies may be expected.
D		Worse than ZOC C	Worse than ZOC C	Large depth anomalies may be expected.
U		Unassessed - The quality of the bathymetric data has yet to be assessed.		

173000G

NOAA CUSTOM CHART
NOTES GEOSPATIAL DATABASE
VERSION 3.0 - 15 JULY 2024

The records of the NOAA Custom Chart Notes Geospatial Database are current as of July 15, 2024. Subsequent additions and refinements are to be expected. Please refer to all available navigational publications for complete information about the charted area.

CAUTION CHART UPDATES

This NOAA Custom Chart contains up-to-date information only as of the time of creation, and will become outdated. Mariners are advised to visit <https://distribution.charts.noaa.gov/navigation-updates/> to check for critical and routine updates, and to render a new NOAA Custom Chart when the ENC data used to make the chart is updated. Notices to Mariners are not issued for corrections to this NOAA Custom Chart.

AUTHORITIES

Hydrography and topography by the National Ocean Service, Coast Survey, with additional data from the Corps of Engineers, Geological Survey, U.S. Coast Guard and National Geospatial-Intelligence Agency.

COMMENTS REQUESTED

NOAA encourages users to submit inquiries, discrepancies, or comments about this chart via NOAA's ASSIST tool at <https://nauticalcharts.noaa.gov/customer-service/assist/>.

CAUTION AUTOMATED CHART GENERATION

This NOAA Custom Chart has been automatically rendered from NOAA Electronic Navigational Chart (NOAA ENC®) data. Mariners using this NOAA Custom Chart are advised that this is a static reproduction of the NOAA ENC®. This NOAA Custom Chart has not been individually quality checked or adjusted for optimal use for navigation. The portrayal may be at a different scale from that of the original NOAA ENC®. Mariners are advised to use caution when using this NOAA Custom Chart for navigation and are encouraged to use the latest NOAA ENC® to access the most up-to-date information. Mariners must also comply with all applicable regulatory requirements.

HEIGHTS

Heights of fixed aids to navigation and vertical clearances of overhead obstructions will be shown in feet if the units are set to feet or fathoms. If units are set to meters, heights will be shown in meters. Land elevation values are shown in meters only.

WATER LEVELS, CURRENTS, AND TIDES

Real-time water levels, tide predictions, and tidal current predictions are available on the internet from NOAA's Center for Operational Oceanographic Products and Services (CO-OPS) at https://tidesandcurrents.noaa.gov/water_level_info.html and https://tidesandcurrents.noaa.gov/currents_info.html.

ABBREVIATIONS

For complete list of Symbols and Abbreviations, see Chart No. 1.

173000G

POLLUTION REPORTS

Report all spills of oil and hazardous substances to the National Response Center via 1-800-424-8802 (toll free), or to the nearest U.S. Coast Guard facility if telephone communication is impossible (33 CFR 153).

WARNING

The prudent mariner will not rely solely on any single aid to navigation, particularly on floating aids. See U.S. Coast Guard Light List and U.S. Coast Pilot for details.

SUPPLEMENTAL INFORMATION

Consult U.S. Coast Pilot 8 for important supplemental information.

Refer to charted regulation section numbers.

SUPPLEMENTAL INFORMATION

Consult U.S. Coast Pilot 9 for important supplemental information.

Refer to charted regulation section numbers.

SOUNDING DATUM

Soundings referred to Mean Lower Low Water (MLLW).

AIDS TO NAVIGATION

Consult U.S. Coast Guard Light List for supplemental information concerning aids to navigation.

RADAR REFLECTORS

Radar reflectors have been placed on many floating aids to navigation. Individual radar reflector identification on these aids has been omitted from this chart.

ADDITIONAL INFORMATION

Additional information can be obtained at www.nauticalcharts.noaa.gov

SUPPLEMENTAL INFORMATION

Consult U.S. Coast Pilot 8 and Canadian Sailing Directions, Hecate Strait, Dixon Entrance, Portland Inlet and Adjacent Waters and Haida Gwaii for important supplemental information.

Information concerning Canadian Nautical Charts, Sailing Directions, Tide Tables, and other Government publications of interest to mariners may be obtained on request to the Dominion Hydrographer, Canadian Hydrographic Service, Department of Fisheries and Oceans, Ottawa.

VERTICAL DATUM

Overhead clearances are referred to Mean High Water (MHW).

173000G

NOTE A

Navigation regulations are published in Chapter 2, U.S. Coast Pilot 8. Additions or revisions to Chapter 2 are published in the Notices to Mariners. Information concerning the regulations may be obtained at the Office of the Commander, 17th Coast Guard District in Juneau, AK or at the Office of the District Engineer, Corps of Engineers in Anchorage, AK.

Refer to charted regulation section numbers.

COLREGS, 80.1705 (SEE NOTE A)

International Regulations for Preventing Collisions at Sea, 1972. The entire area of this chart falls seaward of the COLREGS Demarcation Line.

VESSEL TRANSITING

The U.S. Coast Guard and the Pacific States/British Columbia Oil Spill Task Force endorse a system of voluntary measures and minimum distances from shore for certain commercial vessels transiting along the coast anywhere between Cook Inlet, Alaska, and San Diego, California. See U.S. Coast Pilot, Chapter 3 for details.

CAUTION

Glaciers deposit ice which drifts from Holkham Bay into Stephens Passage. Mariners are advised to exercise extreme caution.

NOTE A

Navigation regulations are published in Chapter 2, U.S. Coast Pilot 9. Additions or revisions to Chapter 2 are published in the Notices to Mariners. Information concerning the regulations may be obtained at the Office of the Commander, 17th Coast Guard District in Juneau, AK or at the Office of the District Engineer, Corps of Engineers in Anchorage, AK.

Refer to charted regulation section numbers.

COPYRIGHT

No copyright is claimed by the United States Government under Title 17 U.S.C. However, other nations may claim intellectual property rights on the compilation of data depicting the foreign waters shown on this chart.

CAUTION

Temporary changes or defects in aids to navigation are not indicated on this chart. See Local Notice to Mariners.

CAUTION LIMITATIONS ON THE USE OF RADIO SIGNALS

Limitations on the use of radio signals as aids to marine navigation can be found in the U.S. Coast Guard Light Lists and National Geospatial-Intelligence Agency Publication 117.

Radio direction-finder bearings to commercial broadcasting stations are subject to error and should be used with caution.

173000G

CAUTION

The mud flat in front of Taku Glacier is expanding rapidly to the southwest. 1997 survey data reveal that extensive shoaling has occurred from Jaw Point to Davidson Point and is expected to continue. Passage through this area should not be attempted without local knowledge.

CAUTION

The transit of Seymour Canal from Tiedeman Island north should be done with due caution and local knowledge.

CAUTION

Salt water and land areas in Glacier Bay National Park and Preserve are administered by the National Park Service, U.S. Department of the Interior. Federal regulations applicable in National Parks and Monuments govern the use of this area.

GLACIAL INLET

Mariners use caution when navigating near the heads of glacial inlets. Heads of glacial inlets are highly changeable.

CAUTION

Falling rock and debris make near shore transit hazardous in the vicinity of Sawyer Glacier.

NOTE

Strong tidal currents exist in the entrances to both Tracy and Endicott Arm. Maneuverability in these areas can be limited by the presence of icebergs moving with the current.

CAUTION

Due to tidal zoning differences between Muir Inlet and Adams Inlet tide gauges, a possible error may exist in some of the charted soundings in this area. The greatest portion of the error would probably occur in the narrow passages leading to the upper portion of Adams Inlet. The average error recorded is 2.1 meters/7 feet.

GLACIER BAY NATIONAL PARK AND PRESERVE

Hunting is not permitted within Glacier Bay National Park. Sport fishing is permitted in accordance with Alaska State fishing regulations.

GLACIER BAY NATIONAL PARK AND PRESERVE
(36 CFR PART 13, SUBPART N; SEE NOTE A)

CURRENTS

Currents may attain velocities of 8 or 10 knots in North and South Inian Passes. For current predictions consult the Tidal Current Tables, Pacific Coast of North America and Asia.

LOCAL MAGNETIC DISTURBANCE

Differences of as much as 3° from the normal variation have been observed on George Island at the head of Granite Cove.

173000G

LOCAL MAGNETIC DISTURBANCE

Differences of as much as 7° from the normal variation have been observed in North Passage.

LOCAL MAGNETIC DISTURBANCE

Differences of as much as 5° from the normal variation have been observed in Rendu Inlet.

LOCAL MAGNETIC DISTURBANCE

Differences of as much as 3° from the normal variation have been reported near Cannery Point on course to Tenakee Springs.

NOAA WEATHER RADIO BROADCASTS

The NOAA Weather Radio station listed below provides continuous weather broadcasts. The reception range is typically 20 to 40 nautical miles from the antenna site, but can be as much as 100 nautical miles for stations at high elevations.
Cape Fanshaw, AK KZZ-88 162.425 MHz

NOAA WEATHER RADIO BROADCASTS

The NOAA Weather Radio station listed below provides continuous weather broadcasts. The reception range is typically 20 to 40 nautical miles from the antenna site, but can be as much as 100 nautical miles for stations at high elevations.
Juneau, AK WXJ-25 162.550 MHz

LOCAL MAGNETIC DISTURBANCE

Differences of as much as 20° from the normal variation have been observed in Chilkoot and Chilkat Inlets.

LOCAL MAGNETIC DISTURBANCE

Differences of as much as 5° from the normal variation have been observed in Gastineau Channel in the vicinity of Latitude 58°15'N.

NOAA WEATHER RADIO BROADCASTS

The NOAA Weather Radio station listed below provides continuous weather broadcasts. The reception range is typically 20 to 40 nautical miles from the antenna site, but can be as much as 100 nautical miles for stations at high elevations.
Althorp Peak, AK KZZ-86 162.425 MHz

NOAA WEATHER RADIO BROADCASTS

The NOAA Weather Radio station listed below provides continuous weather broadcasts. The reception range is typically 20 to 40 nautical miles from the antenna site, but can be as much as 100 nautical miles for stations at high elevations.
Haines, AK WXM-97 162.400 MHz

NOAA WEATHER RADIO BROADCASTS

The NOAA Weather Radio station listed below provides continuous weather broadcasts. The reception range is typically 20 to 40 nautical miles from the antenna site, but can be as much as 100 nautical miles for stations at high elevations.
Mt. Robert Barron, AK KZZ-87 162.450 MHz